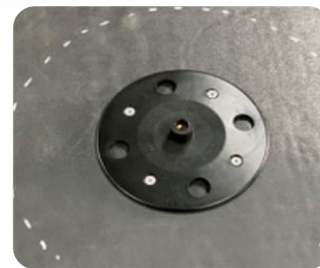


Quick-Slide Mounting anchor

General assembly instructions (EPDM - Selfadhesive Cover tape)



Follow the simple steps below to install the mounting anchor.
Always thoroughly clean the roof covering where you will be installing the anchor.



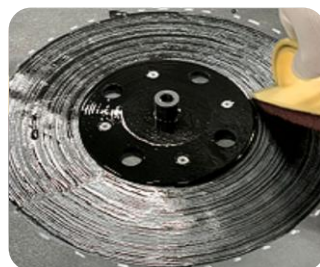
Step 1

Place the black mounting base plate on the roof covering at the desired location.

Fasten the mounting base plate with 4 screws.

The chosen screw depends on the thickness of the insulation and the surface in which you attach it.

(the large holes are for woodwoolcement screws)



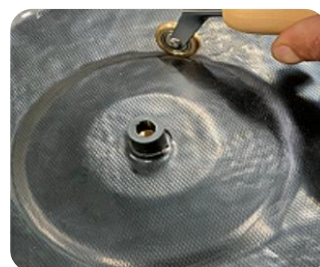
Step 2

Place the EPDM Covertape (with protective film) over the mounting plate and draw the edge zone with a crayon.

The EPDM covertape can now be incorporated watertight in accordance with the manufacturer's processing instructions.

Prime the base plate and the roof covering with an primer.

(The EPDM primer has a drying time of approx. 5 minutes)



Step 3

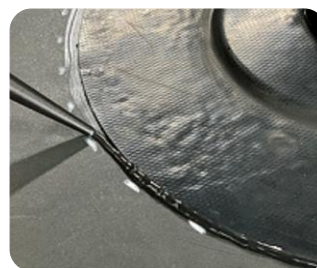
Remove the protective film from the Covertape and carefully place it on the mounting plate and the roof covering.

Work carefully and evenly from the inside out to avoid the formation of large air bubbles under the material.

Now press firmly on the Covertape with a suitable pressure roller. Preferably use a narrow pressure roller around the mounting plate. (see picture)

Quick-Slide Mounting anchor

General assembly instructions (EPDM - Selfadhesive Cover tape)



Step 4

Place the black EPDM sealing ring and the black cover cap. Then screw the supplied threaded rod hand tight on to the mounting plate. Then screw the locknut on the threaded rod and tighten it firmly with a wrench

Step 5

Seal the cuff all around with an UV resistant EPDM sealant. The mounting anchor is now mechanically and waterproof attached to the roof construction.

Parts mounting anchor

- A** Rivet M10 x 100 RVS A2
- B** Lock nut M10 RVS A2
- C** Cover cap Ø 66 mm
- D** EPDM sealing ring 2,0 mm
- E** Roofing Ø 300 mm
- F** Mounting plate Ø 150 mm

